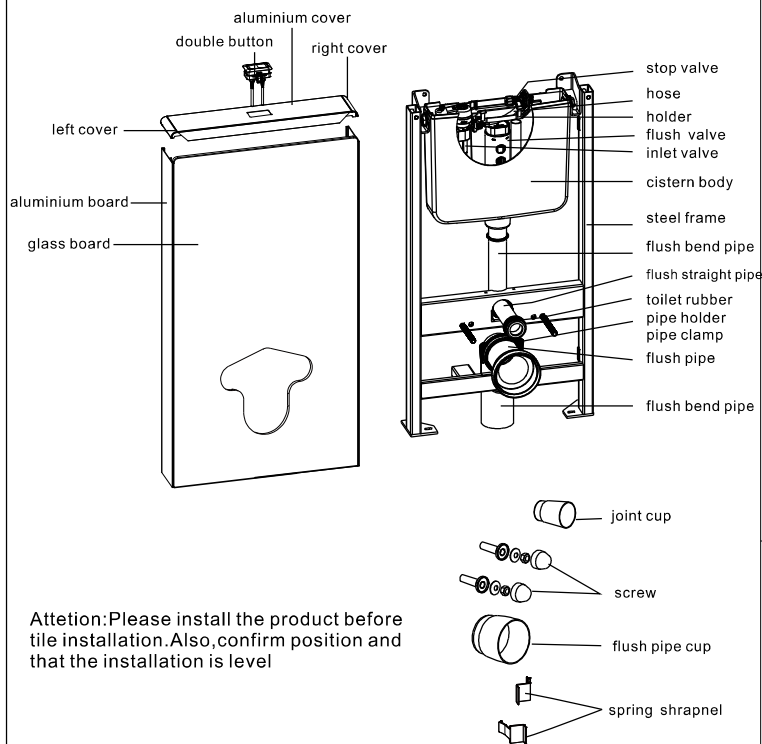


Instruction for glass concealed cistern

1. Fitting chart



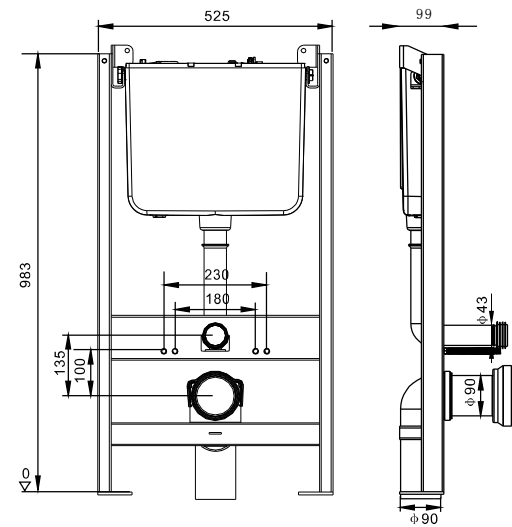
Attention: Please install the product before tile installation. Also, confirm position and that the installation is level

Technical Parameter:

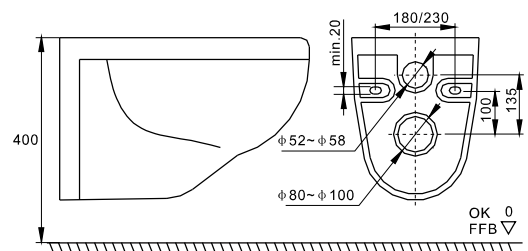
- (1) Water inlet $\frac{1}{2}$ "
- (2) Water inlet pressure range: 0.2 Bar to 9 Bar
- (3) Water temperature range: 2°C to 45°C .
- (4) 3/6Ltr Dual Flush (MAX: 7 Ltr). Flush time: 3 sec-5 sec
- (5) Rust-proof steel frame. Load capacity is up to 400KG
- (6) Suitable for dry-wall thicknesses of 105mm-200 detach

Note:
please check all fitting as the chart above. If there is anything missing, please contact your supplier.

2. Technologic data



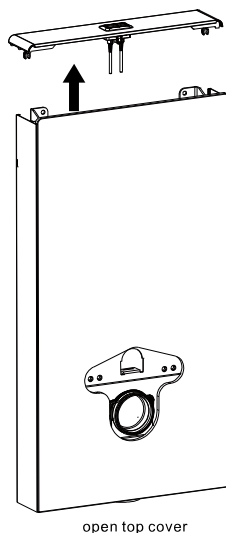
3. Technology size for wall hung toilet



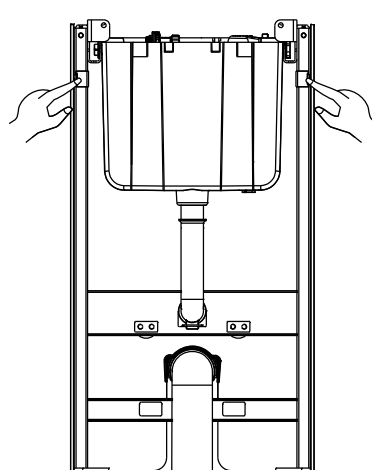
The measure requirement of wall hung toilet:

- (1). The distance of the two hanging holes' centre is 180mm or 230mm.
- (2). The distance between fill hole's centre and flush hole's centre is 135mm.
- (3). The distance between flush hole's centre and hanging hole's centre is 100mm.
- (4). The diameter of fill hole is $\phi 52\text{mm} \sim \phi 58\text{mm}$.
- (5). The outer diameter of flush hole is $\phi 80\text{mm} \sim \phi 100\text{mm}$.
- (6). The diameter of hanging hole can't be less than $\phi 20\text{mm}$.
- (7). The height from the top surface of wall hung toilet to the floor is 400mm (10mm more or less).

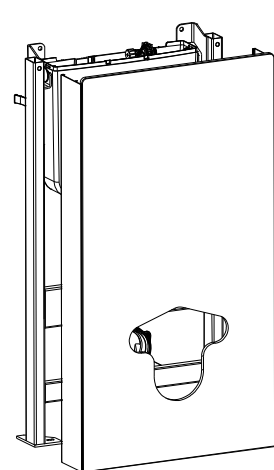
4. preparation



open top cover

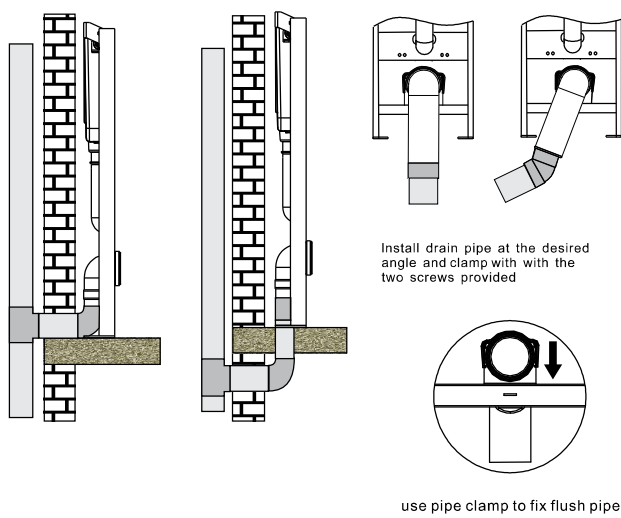


take out spring holder from two sides

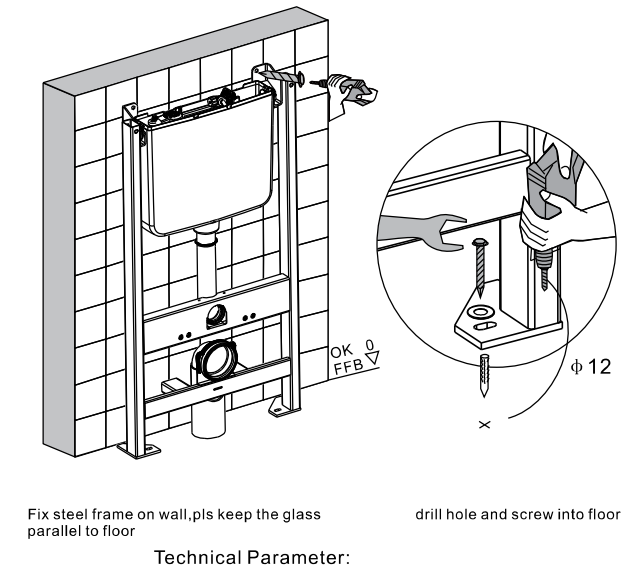


Detach glass

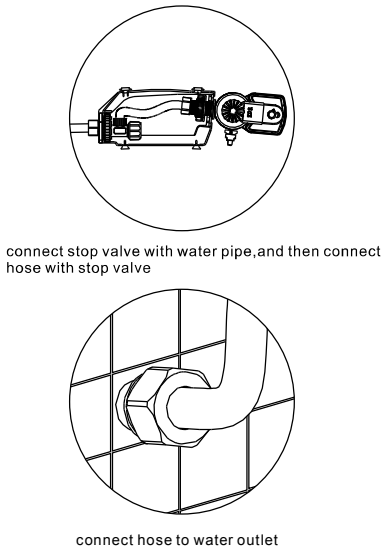
5.Install drainage pipe



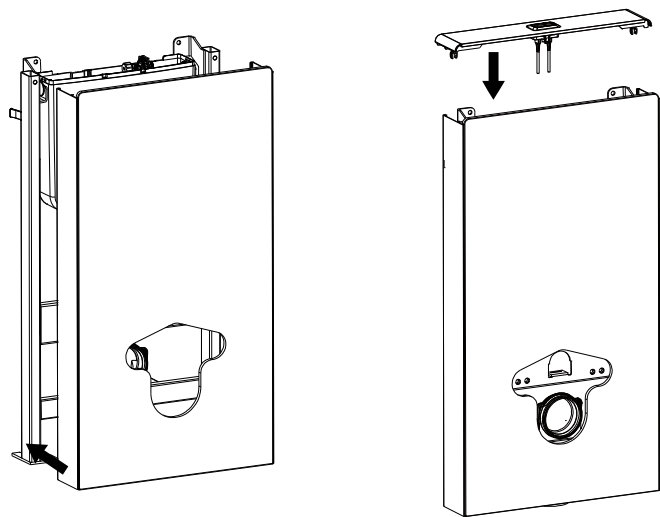
6.Fix steel frame



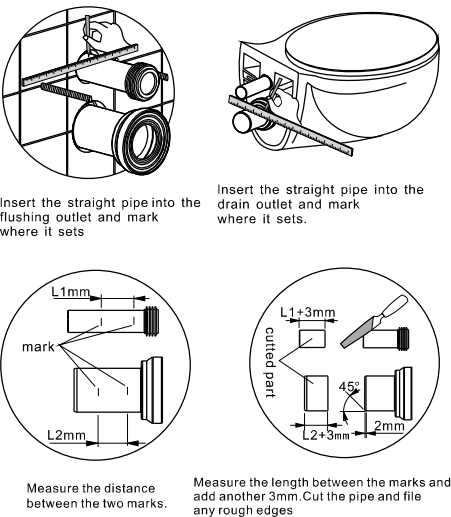
7.Install inlet pipe



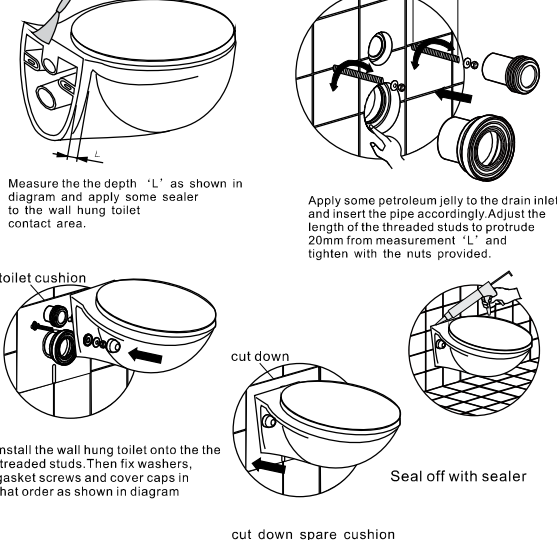
8.Method of installation



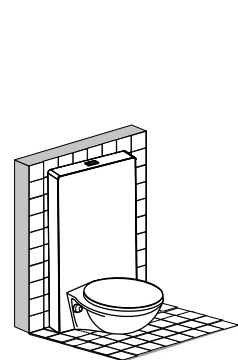
12.Adjust straight pipe



13.Install toilet

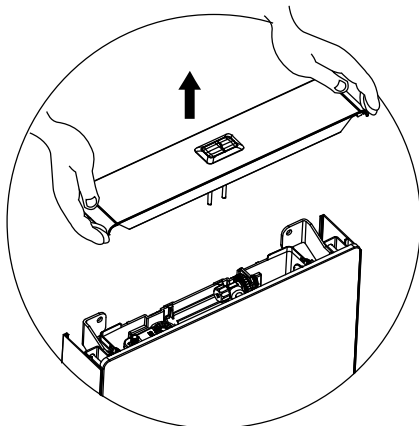


11.Finalise

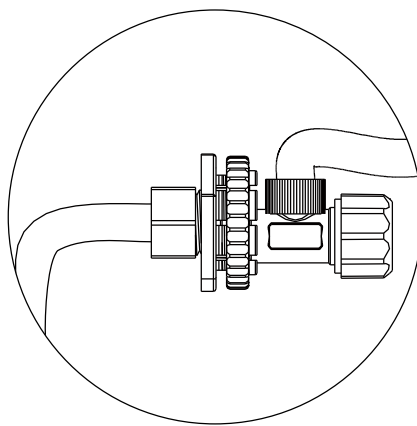


Maintenance for glass concealed cistern (wall hung toilet)

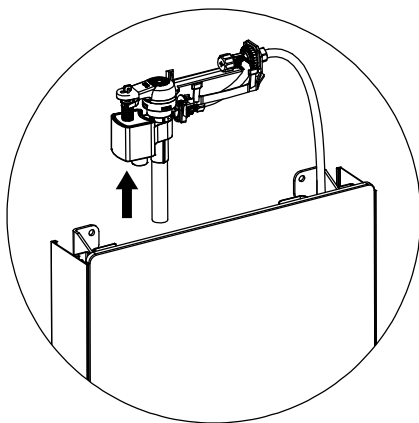
1. Replace inlet valve and flush valve



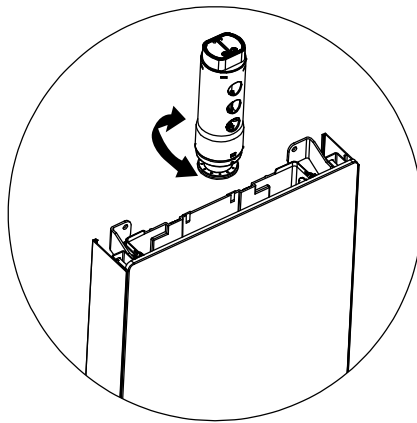
① take out cover



② turn off stop valve

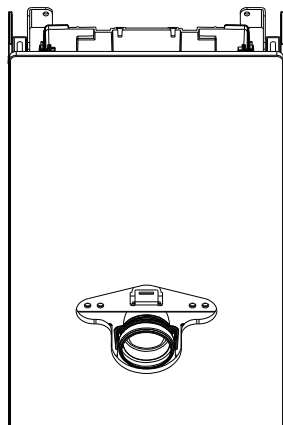


③ Take out holder and fill valve

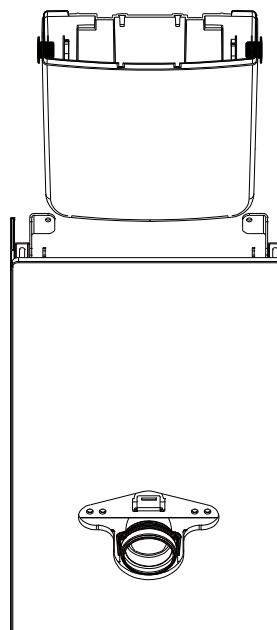


④ take out the flush valve

2. maintenance for plastic cistern



① unscrew nuts

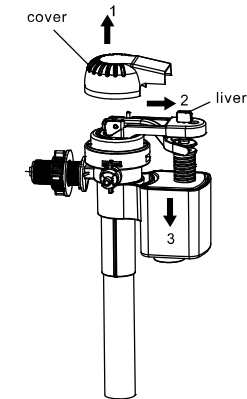


② take out plastic cistern inside

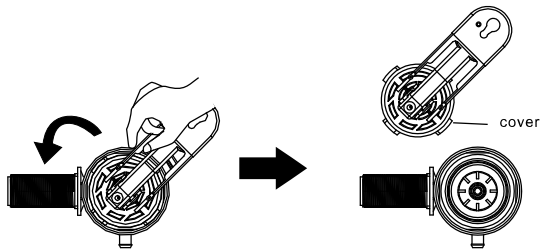
1、Maintenance of fill valve

FAQ’ s on Filler Valve

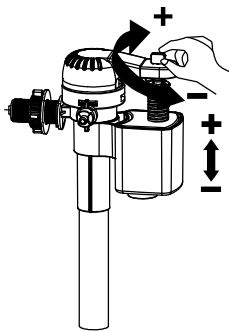
Problem	Solution
1.The water level too high or too low	Adjust water level(see figure1)
2.Cistern overflow	Clean the rubber seal(see figure2)
3.Water intake blockage	Remove cover,as in figure 3,and clean the parts as shown in figure 4,5 and 6
4.Others questions	Pls consult with professional technician



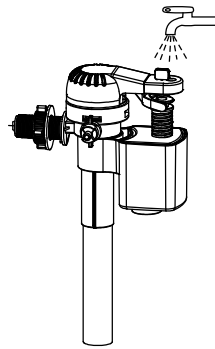
③ take out cover,and right twist liver then pull down small box



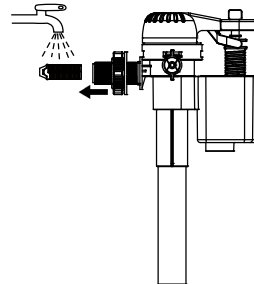
⑤ screw out valve cover



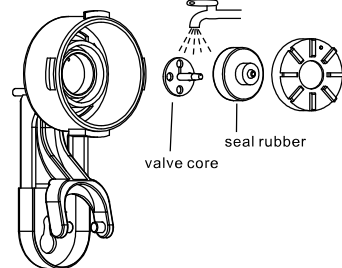
① rotate button to adjust water level



② clean



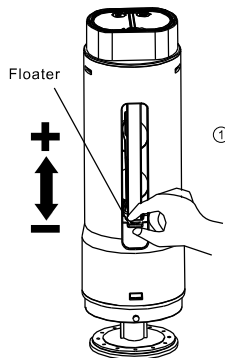
④ take out filter



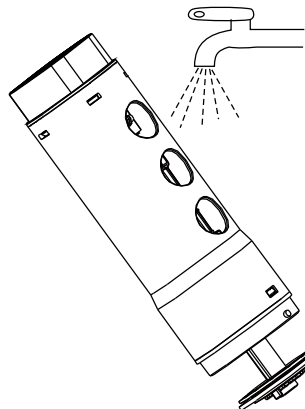
⑥ put out valve core and seal rubber and clean it.

2、FAQ's on Flush Valve

Problem	Reason	Solution
Cannot flush water	Lost alignment,broken,or detached from push button	Uninstall and re-align flush valve If broken,replace Makesure that push button levers are attached to the flush valve
	Not enough water being flushed out	Adjust as in figure 1
A leak in the flushing	Seals not sealing well	Clean or replace the rubber seal



adjust floater to adjust flush volume



④ clean